

Invia® Liberty™ NPWT System

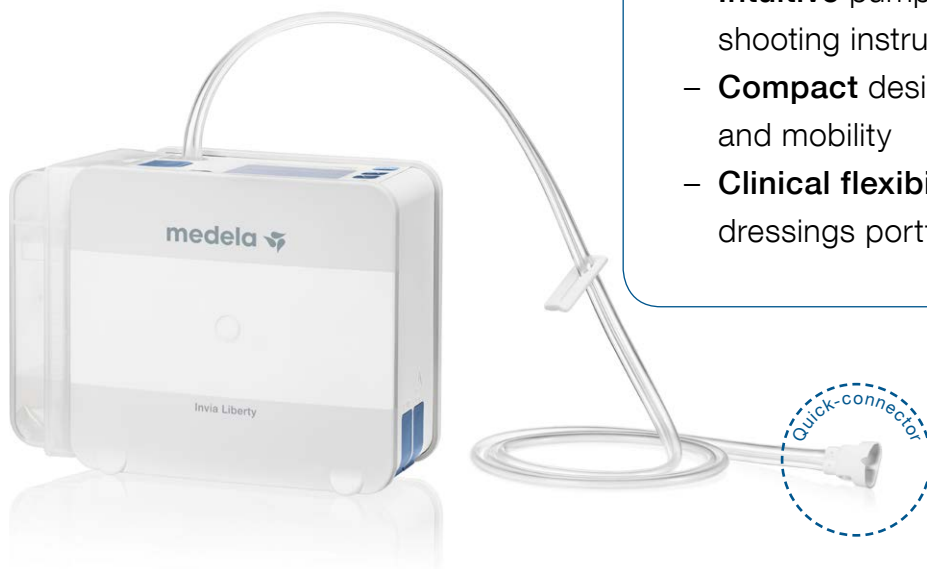
THERAPY CONFIDENCE MADE SIMPLE

Therapy Confidence

- **Intelligent** Pressure Control from the pump to the wound site¹
- **Dynamic** Exudate Removal helps prevent blockages from the wound site to the pump
- **Secure** canister and tubing connection² with an audible click

Simplified Management

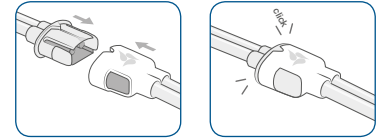
- **Intuitive** pump operation and troubleshooting instructions
- **Compact** design for patient comfort and mobility
- **Clinical flexibility** with comprehensive dressings portfolio



Medela provides efficient solutions to support clinicians with Negative Pressure Wound Therapy management in all patient care settings.

Invia Liberty delivers therapy **confidence by intelligently controlling set pressure at the wound site**¹. The pump dynamically adapts the air flow cycle to both volume and viscosity of the fluid in the tubing to optimize exudate removal.

Click-in canister attachment and **one-touch canister release** button allow for easy canister exchange. **Secure tubing attachment** is guaranteed with the new Invia Quick-connector feature².



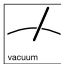

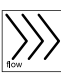
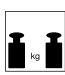
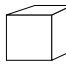
Intuitive and quiet pump operation fully integrates into the patient's daily life, while **patient comfort and mobility** are facilitated by Invia Liberty's compact design and convenient carrying case.

Key features at a glance

- Intelligent Pressure Control from the pump to the wound site
- Dynamic Exudate Removal actively helps prevent blockages with air flow cycles adapting up to four times a minute
- Pressure options from -40 to -200mmHg including standard -125 mmHg
- On-screen air leak indicator
- Custom air leak modes for normal and large wounds
- Easy and secure tubing attachment with the Quick-connector
- One-touch canister release button
- Choice of 300ml and 800ml disposable canisters with solidifier



Technical data

 - 40 mmHg to -200 mmHg	 > 14 Hours	Modes: Constant and Intermittent
 Low flow 5 l/min.	 1 kg 2.2 lbs	Tubing: Double Lumen Tubing, Y-Connector
		Canister: 300 and 800 ml
		 H x W x D 95 x 170 x 150 mm 3.74 x 6.69 x 5.91 inch
		2 year warranty

Find out more about the new Invia Liberty system at www.medela-healthcare.us

CAUTION: U.S. Federal law restricts this device to sale by or on the order of a physician.

¹ Performance data on file at Medela AG
² Usability Validation data on file at Medela AG

Medical Vacuum Technology
for Healthcare Professionals

Please contact us or your local Medela representative for details.

Local contact:

Medela and Invia are registered in the US Patent and Trademark Office. Liberty is a trademark of Medela Holding AG, Switzerland. No trademark registrations in Canada.

 Medela AG
Lättichstrasse 4b
6341 Baar, Switzerland
www.medelahealthcare.com

USA
Medela LLC
1101 Corporate Drive
McHenry, Illinois 60050
USA
Phone +1 877 735 1626
Fax +1 815 307 8942
info-healthcare@medela.com
www.medelahealthcare.us

Canada
Medela Canada Inc.
4160 Sladeview Cres., Unit #8
Mississauga, Ontario, L5L 0A1
Canada
Phone +1 800 435 8316
Fax +1 800 995 7867
info@medela.ca
www.medela.ca